



FULLY MANAGED CLOUD FIREWALLS

IMPROVE NETWORK SECURITY AND INTERNET PERFORMANCE



BANDWIDTH

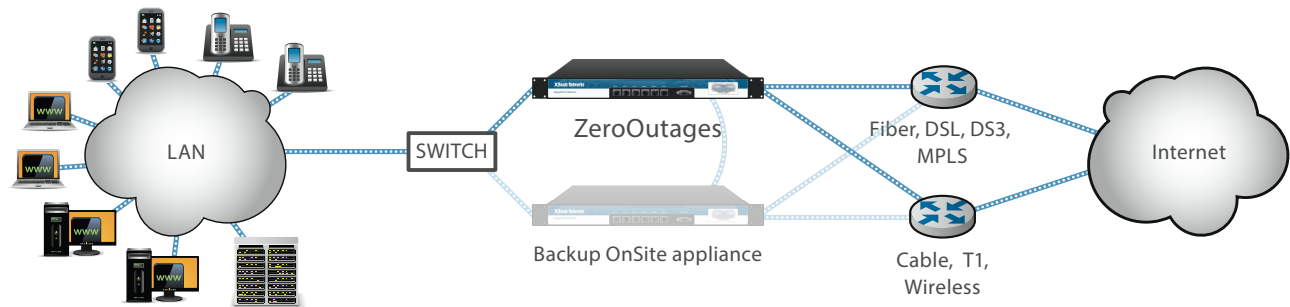
Unique adaptive bandwidth throttling substantially reduces "bandwidth hogging" and automatically prioritizes critical applications like VoIP, Citrix, and other cloud applications. Incorporates intelligent link aggregation and failover.

MANAGEMENT

The ZeroOutages "cloud firewall" solution provides customers with a completely managed solution which is easy to deploy and provides detailed network reporting via a simple to use web-based portal.

FIREWALL

Globally distributed, real-time, intelligent threat protection database. ZeroOutages incorporates unsurpassed web content and application filtering technology. No other solution delivers (MED) machine learning security.



TECHNICAL SPECIFICATIONS

Operating system
EdgeXOS 5.x

Security Processor
4x 2.0GHz

Memory (RAM)
4GB DDR3

Sustained throughput
Up to 150 Mbps

Connections per second
5,000/sec

IP address assignment
Static (DHCP, PPTP Client),
Internal DHCP server, DHCP Relay

NAT modes
One-to-One, Many-to-One,
One-to-Many, custom NAT, PAT,
Transparent Mode

Routing protocols
XOS Best Path Routing, Static
Routes, Policy-Based Routing

VoIP
Full H323-v1-5, SIP Pass-Through

Security
Packet Level Firewall
Intrusion Detection & Prevention
Policy-Based Firewall Ruleset
Web (http/https) Content Filtering
(Malware/Syware/Phishing)
Packet Logging & Reporting
DoS/DDoS Protection
User Defined Signature Filtering

VPN (SD-WAN)
Site2Site SSL (AES/3DES) Tunnel
Requires two ZeroOutages' devices.

Standards
TCP/IP, ICMP, HTTP, HTTPS, SNMP,
DHCP, IEEE 802.3, VLAN 802.1q,
IPSEC Pass-Through

GbE LAN interfaces
1

GbE WAN interfaces
3 (upgradeable to 5)

VLAN interfaces
100

Content Caching Drive
50MB

Hardware Failover
Active / Passive

URL Lookups
100/s

Filtered Sessions
25,000

Rack Mount / Size
Optional / 1U

Power
External 12V-5A

Certification
FCC CE RoHS

Dimensions
9.0" x 5.9" x 1.7"

Environmental
0 to 40C (32 to 104F)

Compliance / Regulatory
PCI 2/3, HIPPA

INCLUDES:

- Intelligent WAN Routing
- Dynamic QoS & Throttling
- SD-WAN Support
- OpenVPN Support (optional)
- Enterprise Security Rule Updates (optional)
- Real-Time Category Filtering (optional)
- Site2Site VPN Configuration (optional)
- WAN Failover
- WAN Bonding / Balancing
- Automated Failover / Failback
- XOS Best Path Routing
- Intelligent Application Routing
- Intelligent Policy-Based Routing
- 3G/4G Cellular Modem (optional)
- Wifi Extender Modem (optional)
- OSPF & RIP Routing Protocols
- ZOOM Portal for Global Control
- Centralized Web-Based Management
- Alert Support (Syslog, SMTP)
- XML Based External API
- SSH Management
- Email Alerting

* Device shown is the upgraded 5 WAN port model.